

Gas regulators, Controllers, Coolers and other accessories

Product catalogue

Argon Gas Regulator

W-169B Gas Regulator	161
W-101 Flow meter gas regulator	161
W-206 Flow gas regulator	162
W-207 gas regulator	162

Co2 Gas Regulator

W-199 Carbon dioxide regulator	163
W-199B Carbon dioxide regulator	163

Controllers

FX-390B	164
---------------	-----

Water-cooling Unit

WC-100/150	165
------------------	-----

Carts & Trailers

ST-7	166
T-130	166
WT-100/150	166
P-30W	166



Ar/MAG Gas Regulator

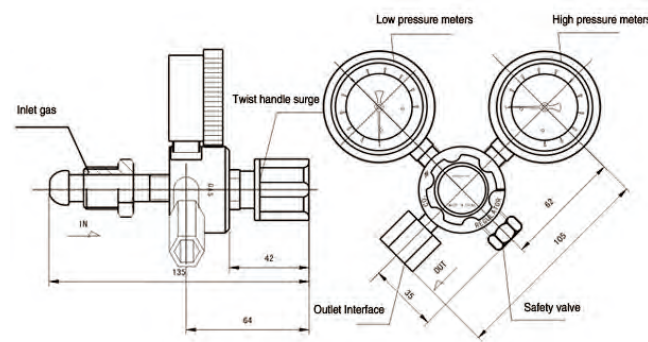


W-169B Gas Regulator



Standard Style	
For gas	Ar/MAG(Ar80% Co2 20%)
High pressure gauge	280kg/4000Psi
Flow	0-30LPM
Inlet pressure(P1)	Ar/MAG:14.8MPa the following
Adjust the pressure(P2)	0.3MPa
Meter mode	OUT type
Inlet thread	CGA580
Outlet thread	M12-1.0RH
Weight	0.8kg

Appearance



Ar/MAG Gas Regulator

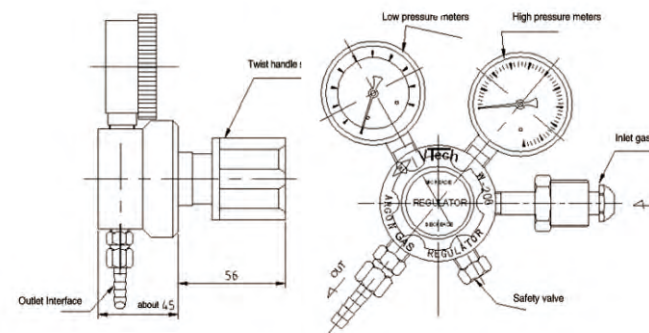


W-206 Flow Gas Regulator



Standard Style	
For gas	Ar/MAG(Ar80% CO220%)
High pressure gauge	High pressure gauge
Low pressure gauge	0.5MPa
Inlet pressure(P1)	Ar/MAG:14.8MPa the following
Adjust the pressure(P2)	0.3MPa
Flow Range	1-25LPM
Inlet thread	G5/8-14"-RH(F)
Outlet thread	M12-1.0RH
Weight	1.1kg

Appearance

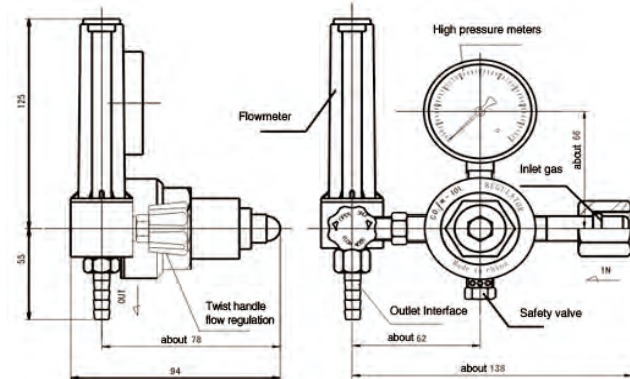


W-101 Flow meter gas regulator



Standard Style	
For gas	Ar/MAG(Ar80% Co2 20%)
High pressure gauge	280kg/4000Psi
Flow	0-30LPM
Inlet pressure(P1)	Ar/MAG:14.8MPa the following
Adjust the pressure(P2)	0.35MPa
Flow Range	1-25L/min
Meter mode	OUT type
Inlet thread	G5/8-14"-RH(F)
Weight	1.1kg

Appearance

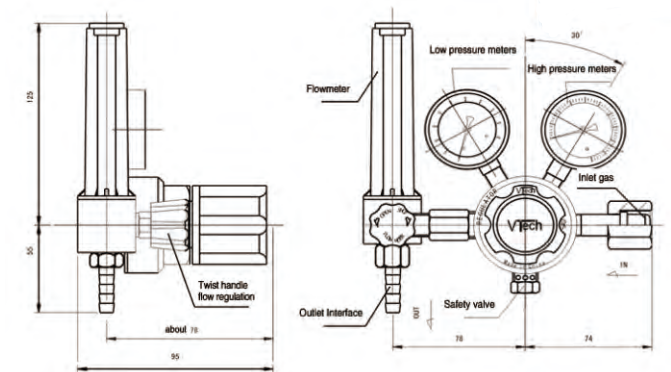


W-207 Gas Regulator



Standard Style	
High pressure gauge	25MPa
Out pressure gauge	0.5MPa
Inlet pressure(P1)	14.8MPa the following
Adjust the pressure(P2)	0.5MPa
Flow Range	1-25LPM
Meter mode	OUT type
Inlet thread	G5/8-14"-RH(F)
Outlet thread	M12-1.0RH
Weight	1.35kg

Appearance



CO₂ Gas Regulator

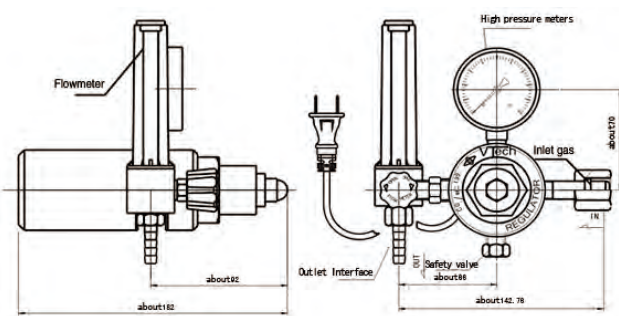


W-199 Carbon dioxide regulator



Standard Style	
For gas	CO ₂ ,Ar,MAG
High pressure gauge	280kg/4000Psi
Inlet pressure(P1)	Ar/MAG:14.8MPa the following CO ₂ :12MPa the following
Adjust the pressure(P2)	0.3MPa
Meter mod	OUT type
Flow Range	1-25L/min (MAG,Ar/CO ₂)
Inlet thread	G5/8-14"-RH(F)
Outlet thread	M12-1.0RH
Power	190W ,210W
Voltage	36V,110V,220V
Power line	3m
Weight	2.1kg

Appearance

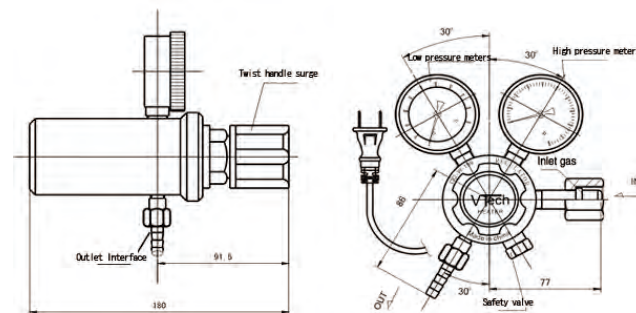


W-199B Carbon dioxide regulator



Standard Style	
For gas	CO ₂ ,Ar,MAG
High pressure gauge	25MPa
Inlet pressure(P1)	Ar/MAG:14.8MPa the following CO ₂ :12MPa the following
Adjust the pressure(P2)	0.5MPa
Meter mod	OUT type
Flow Range	1-50L/min (MAG,Ar/CO ₂)
Inlet thread	G5/8-14"-RH(F)
Outlet thread	M12-1.0RH
Power	190W ,210W
Voltage	36V,110V,220V
Power line	3m
Weight	1.8kg

Appearance



Foot Pedal

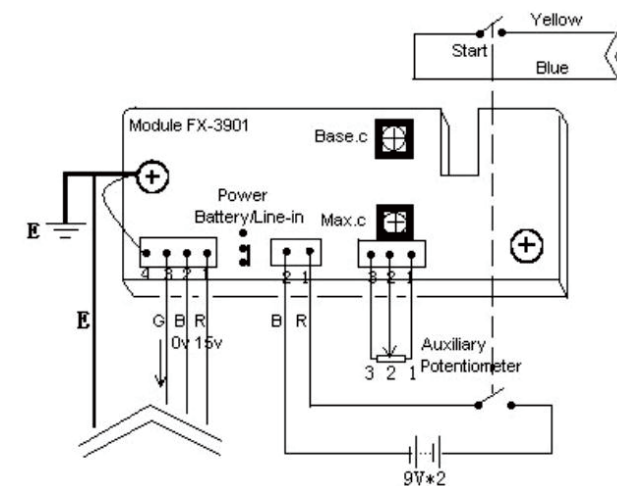


FX-390B



Induction type foot pedal	
Model No.	FX-390B
Serial No.	12D36
Input Voltage	+15V
Output Voltage	0-13V

Major Loop of Foot Pedal



Water-cooling Unit



WC-100



WC-150



Standard Style	
ItemNo.:	WC-100
MAINVOLTAGE	230V 50/60Hz
PHASE	1PH
COOLING CAPACITY	1.7KW(1L/MIN) 1.9KW(1L/MIN) 1.5KW(1L/MIN)
MOTOR	260W
MAX PRESSURE	0.3MPA/60HZ
OPERATION	-20℃~60℃
WEIGHT	14KG
DIMENSION(mm)	515x230x325
RADIATOR	AL/2R CU 26*36CM / 2R CU 26*36CM

Standard Style	
ItemNo.:	WC-150
MAINVOLTAGE	230V 50/60Hz
PHASE	1PH
COOLING CAPACITY	1.7KW(1L/MIN) 1.9KW(1L/MIN) 1.5KW(1L/MIN)
MOTOR	260W
MAX PRESSURE	0.3MPA/60HZ
OPERATION	-20℃~60℃
WEIGHT	14.2KG
DIMENSION(mm)	560x300x250
RADIATOR	AL/2R CU 26*36CM / 2R CU 26*36CM

Carts & Trailers



2-wheel transport units



ST-7

4-wheel transport units



WT-100/150



T-130



P-30W

PT.NO	WEIGHT(Kg)	PACK
ST-7	17	1
T-130	23	1

PT.NO	WEIGHT(Kg)	PACK
WT-100/150	75	1
P-30W	28	1